

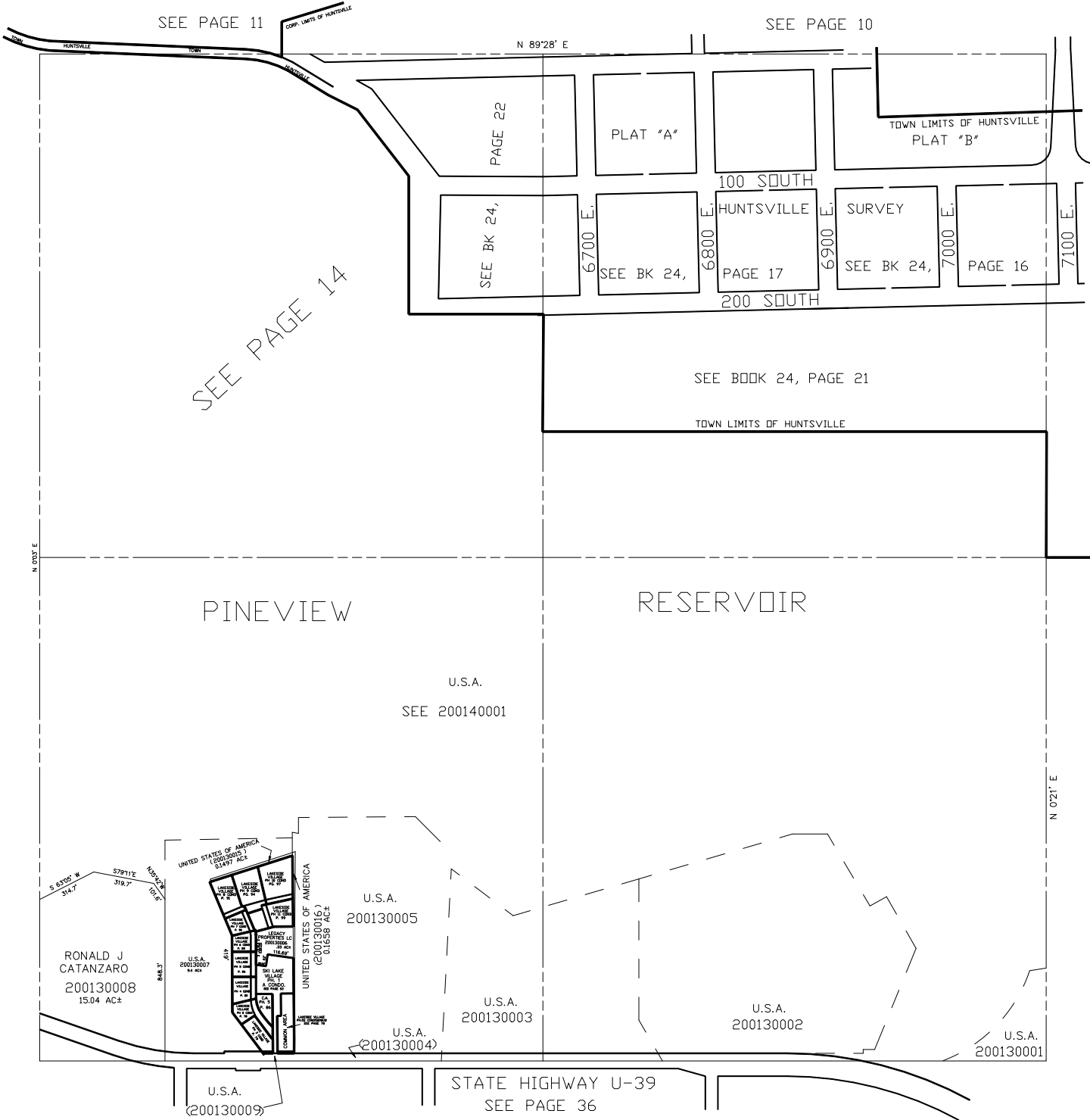
SECTION 13, T.6N., R.1E., S.L.B. & M.

IN WEBER COUNTY  
SCALE 1" = 400'

TAXING UNIT: 318

SEE PAGE 11

SEE PAGE 10



SEE PAGE 15

SEE BOOK 24, PAGE 8

SEE BOOK 21, PAGE 27